



# Planetary Defense: A Meteorite Perspective



- (1) Observed falls.
- (2) Light curves.
- (3) Fusion crust.
- (4) Meteorite fragments from craters.
- (5) Laboratory studies of meteorites.
  - a. Preatmospheric size
  - b. Physical properties
  - c. Internal structure
- (6) Regolith breccias.

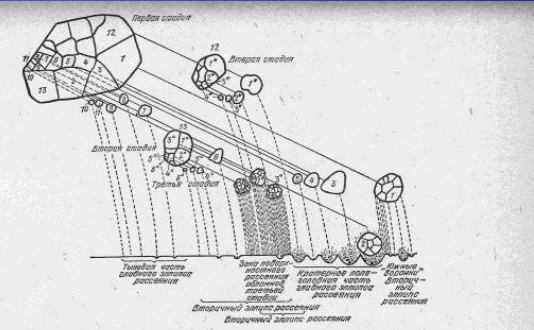
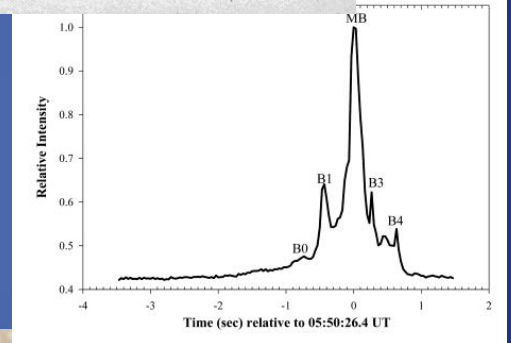


Рис. 36. Схема дробления метеоритного тела во время движения в земной атмосфере с космической скоростью.



Sears et al.  
Session 2 Posters

# Ames Meteorite Characterization Laboratory

High Power Microscopes

Low Power Binoculars

Shock Effects

Albedo

Density & Porosity

Acoustic velocity /elastic moduli

K and Cp

Field Equipment  
 $V_a$   
Cameras

Curation  
Sample preparation

Data manager

NASA-ARC (Jessie Dotson)  
On-line database

LLNL (Megan Bruck)  
Measurements specific to deflection

Ames Materials Science Labs (Parul Agrawal)  
Compressive and Tensile Strength

